



Analysis and demands in Ethernet networks

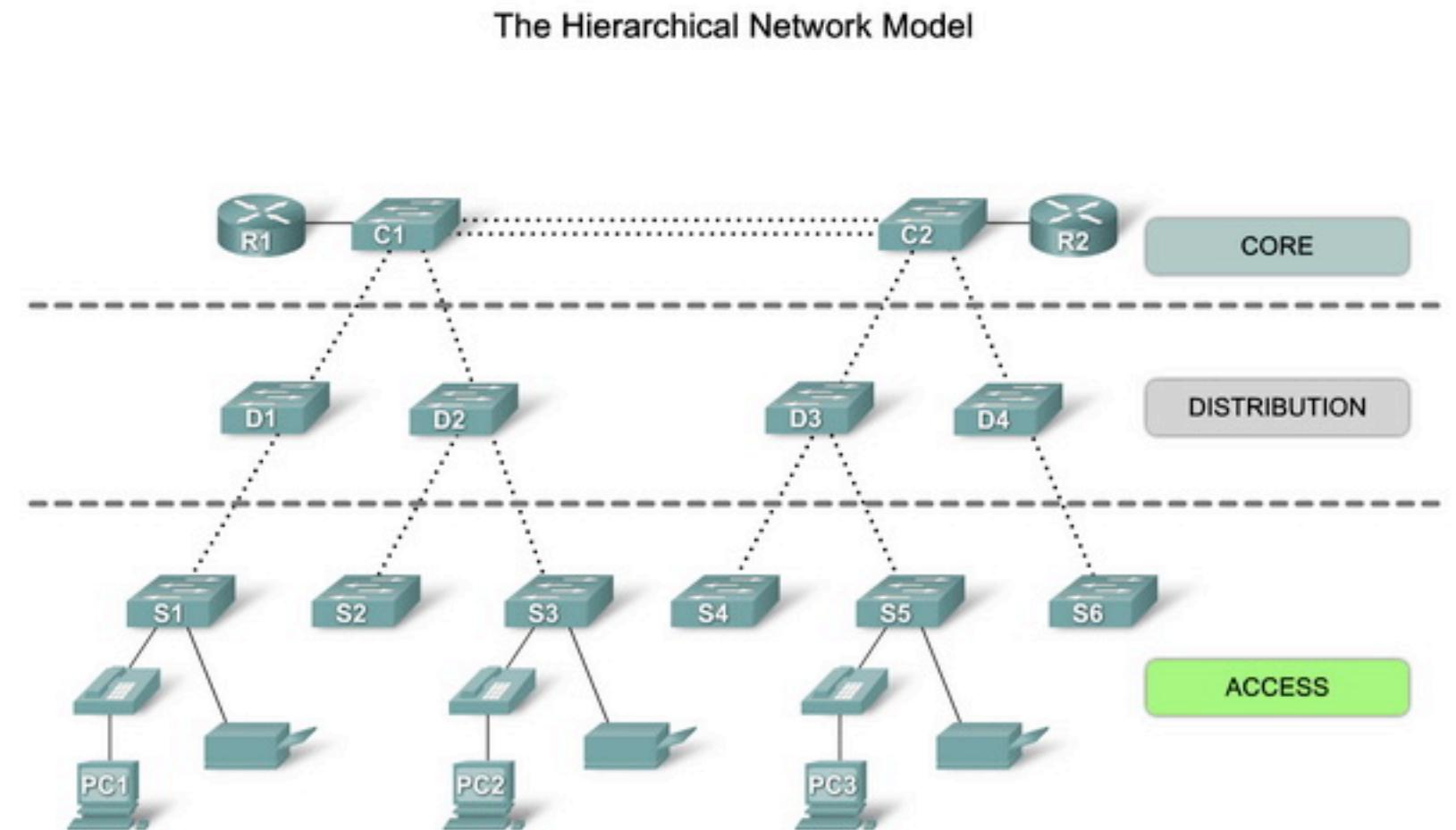
Marcus Wilhelmsson
marcus.wilhelmsson@lnu.se

Contents

- Network layers
- Scalability
- Redundancy
- Performance
- Examples

The hierarchical network model

- Easy to manage and expand
- Problems are usually solved more quickly
- Divide the network into layers, each with its own functions
- Gives scalability and performance



Access layer

- PCs, printers, IP phones
- Provide a means of connecting devices to the network
- Controlling which devices are allowed to communicate on the network

Distribution layer

- Aggregates data before sending it to the core layer for routing
- Controlling the network flow using policies
- Inter-VLAN routing

Core layer

- High-speed backbone
- Connects distribution layer switches
- Connects to other networks such as the Internet
- Aggregates traffic from all distribution layer switches, must be very fast

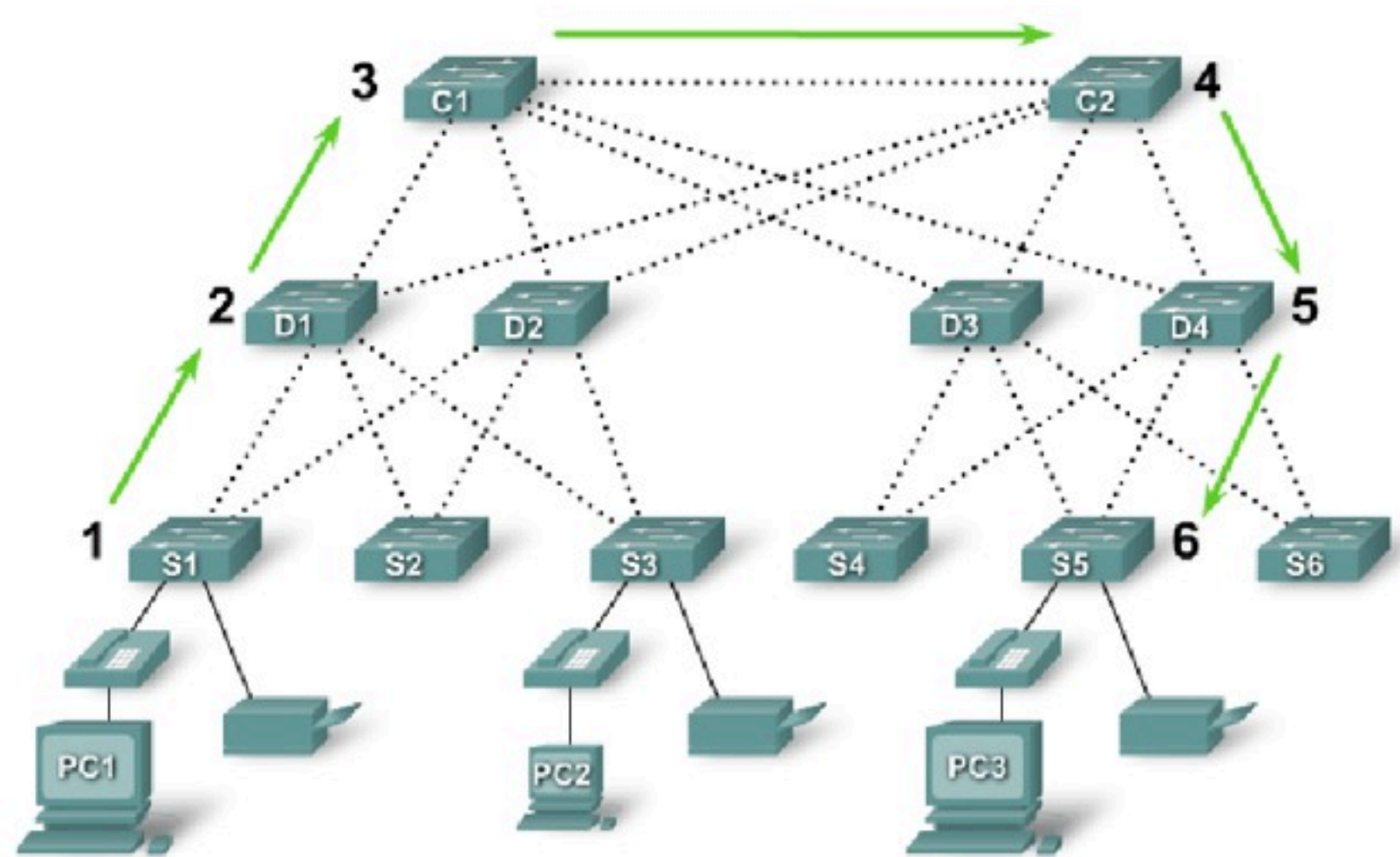
Benefits of a hierarchical network

- Scalability
- Redundancy
- Performance
- Security
- Manageability
- Maintainability

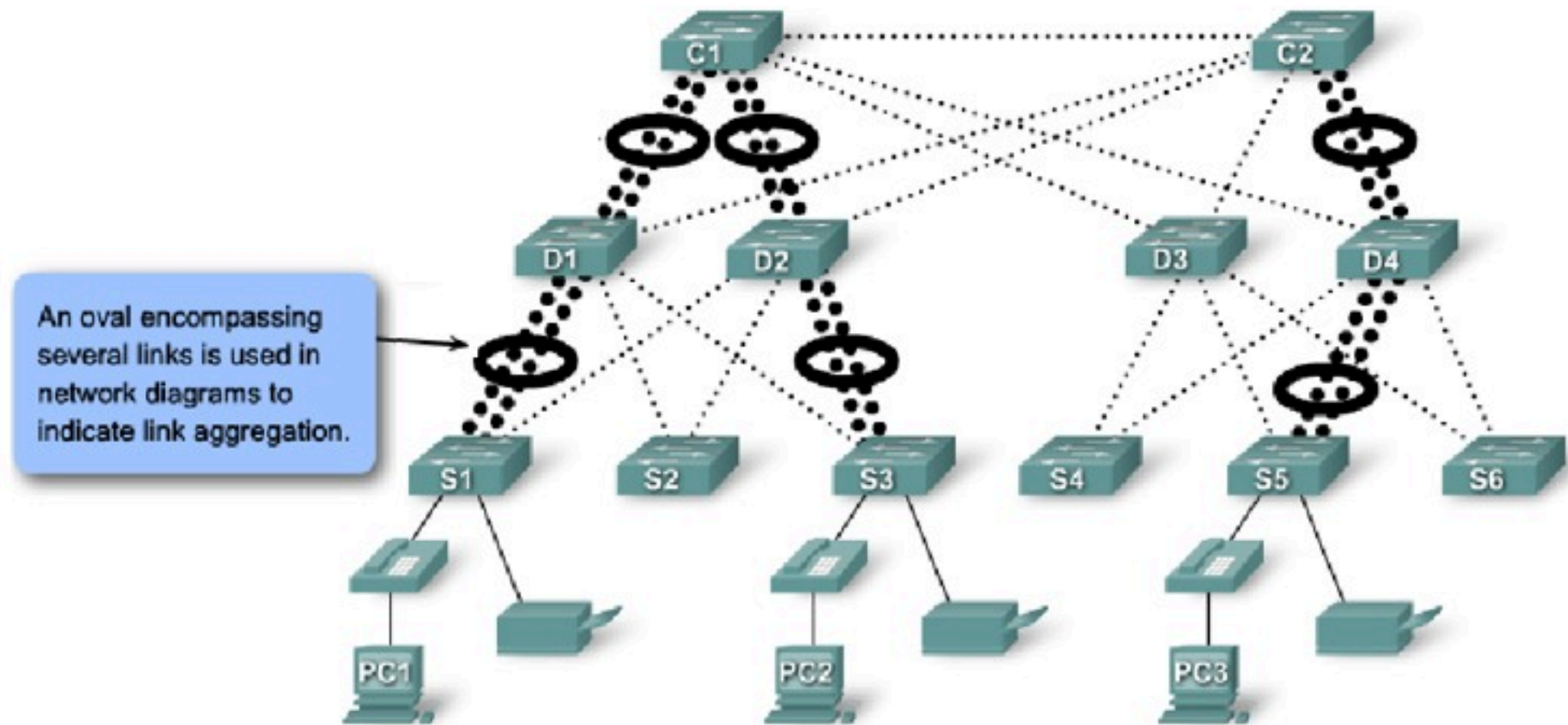
Principles of hierarchical network design

- Network diameter
- Bandwidth aggregation
- Redundancy

Network diameter

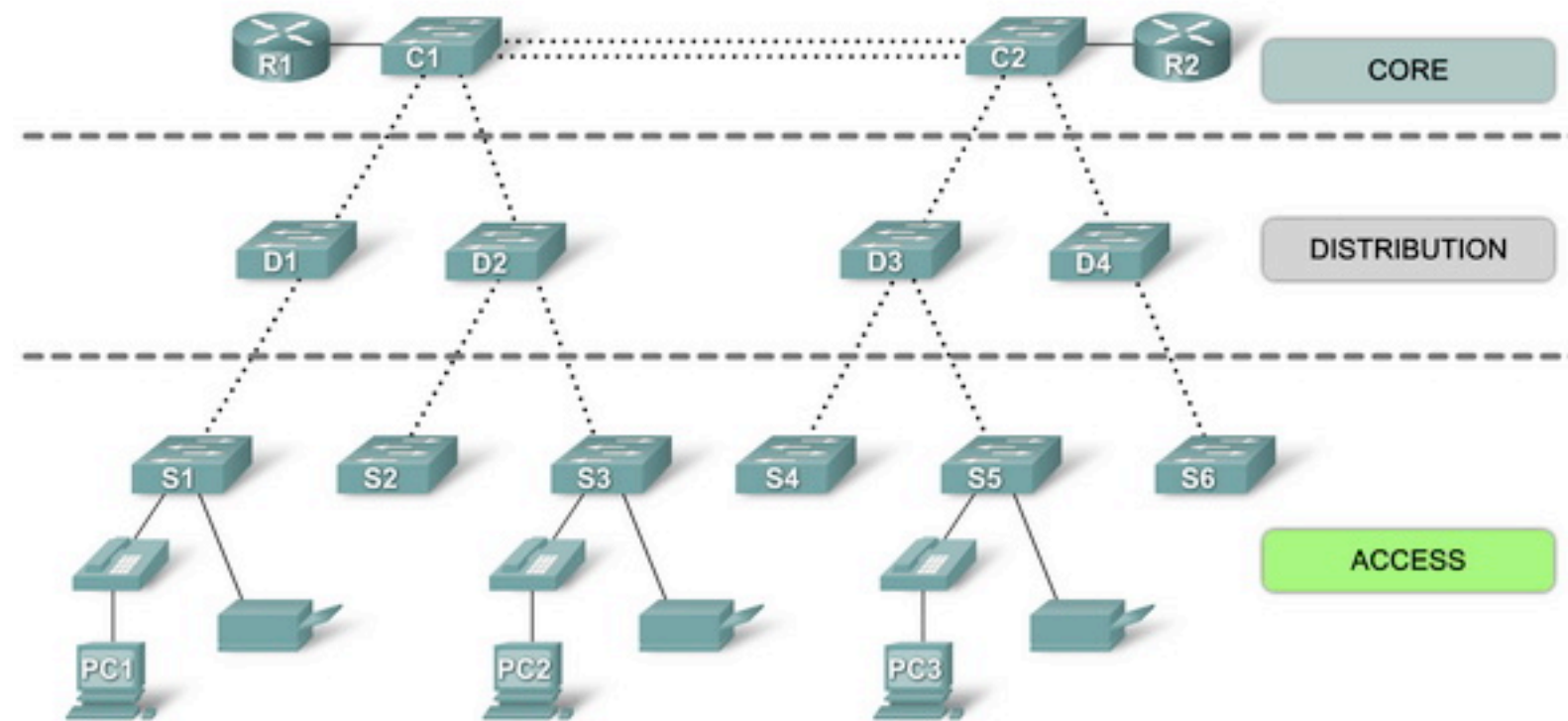


Bandwidth aggregation



Redundancy

The Hierarchical Network Model



Which equipment to choose?

- Traffic flow
- User community
- Data servers
- Creating a topology diagram
- Switch features and performance
- Access layer, distribution layer and core layer features

Example I

- 50 employees
- 4 servers
- Internal business applications
- Cloud applications

Example 2

- 400 employees
- 30 servers
- 2 locations (within one city)

Example 3

- 30 employees
- 800 servers
- Running applications and/or servers for other companies