

Instruktion Installera MS SQL Server 2008

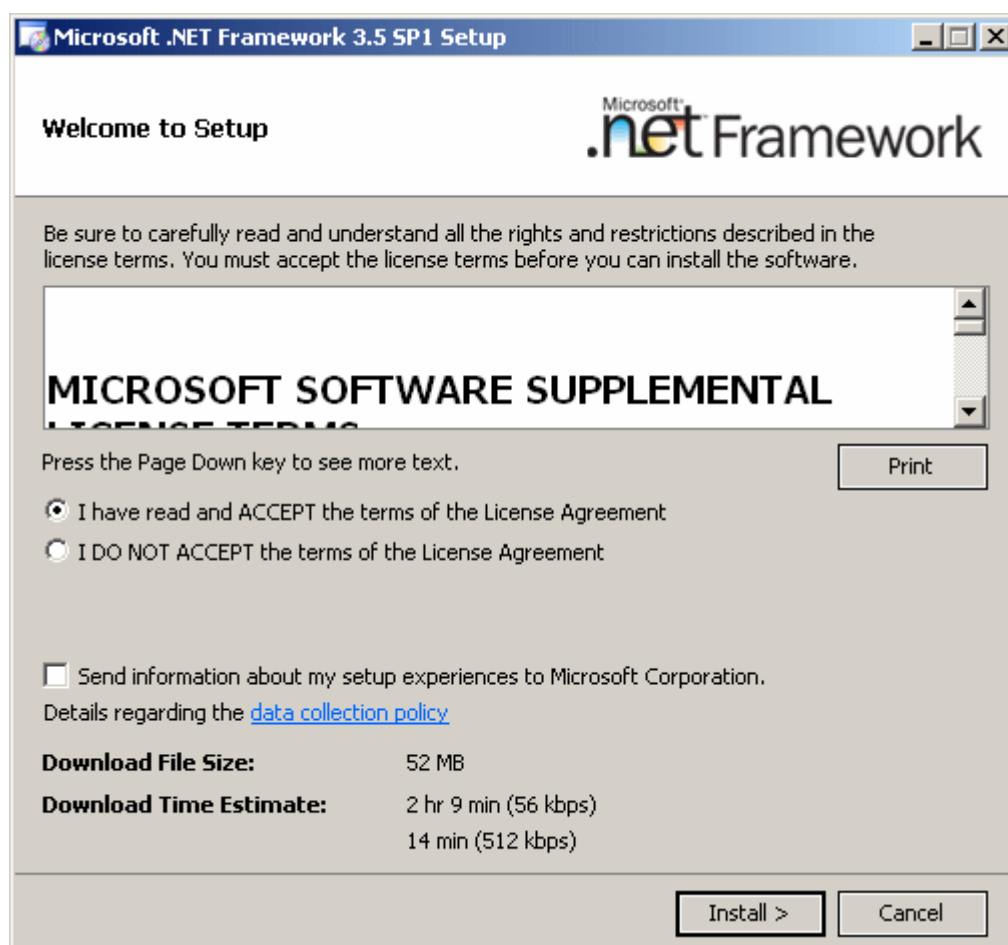
Detta dokument är ett komplement till dokumentet som beskriver installationen av MS SQL Server 2008. I det här dokumentet finns ett förtydligande av de punkter som återfinns i länken enligt följande:

Originaldokumentet återfinns på <http://www.functionx.com/sqlserver/Lesson01.htm>

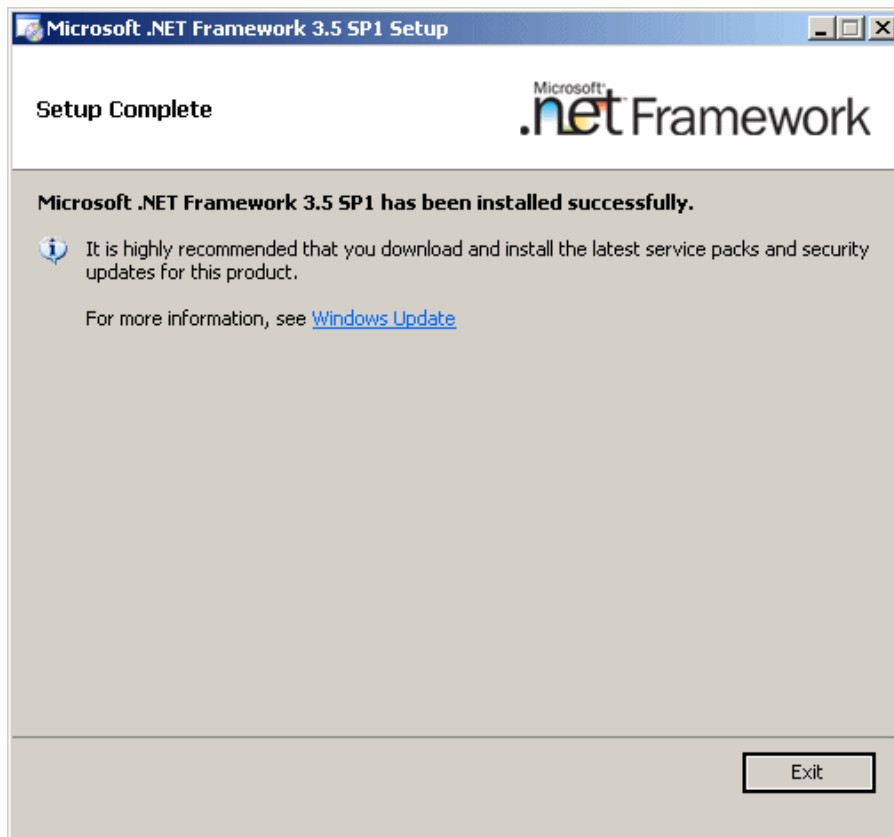
Before installing Microsoft SQL Server 2008, make sure you have installed all service packs on your operating system. If you plan to use Microsoft Visual Studio 2008 to create Microsoft SQL Server 2008 databases, you should install Microsoft SQL Server 2008 first, then install Microsoft Visual Studio 2008.

❖ Practical Learning: Installing MS SQL Server

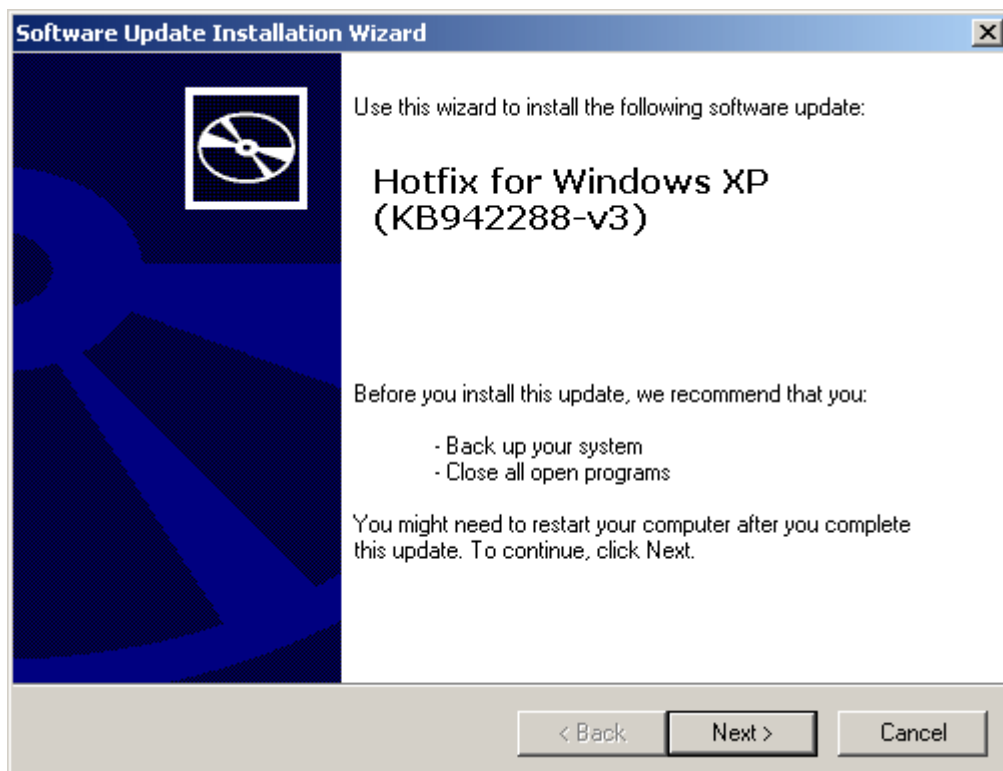
1. Start the computer. Using an account with administrative rights, log in, providing a username and a password
2. Insert the DVD in the drive. The installation will start. You may get a message that the .NET Framework needs to be installed. On that message, click OK. You will be prompted to start the installation:

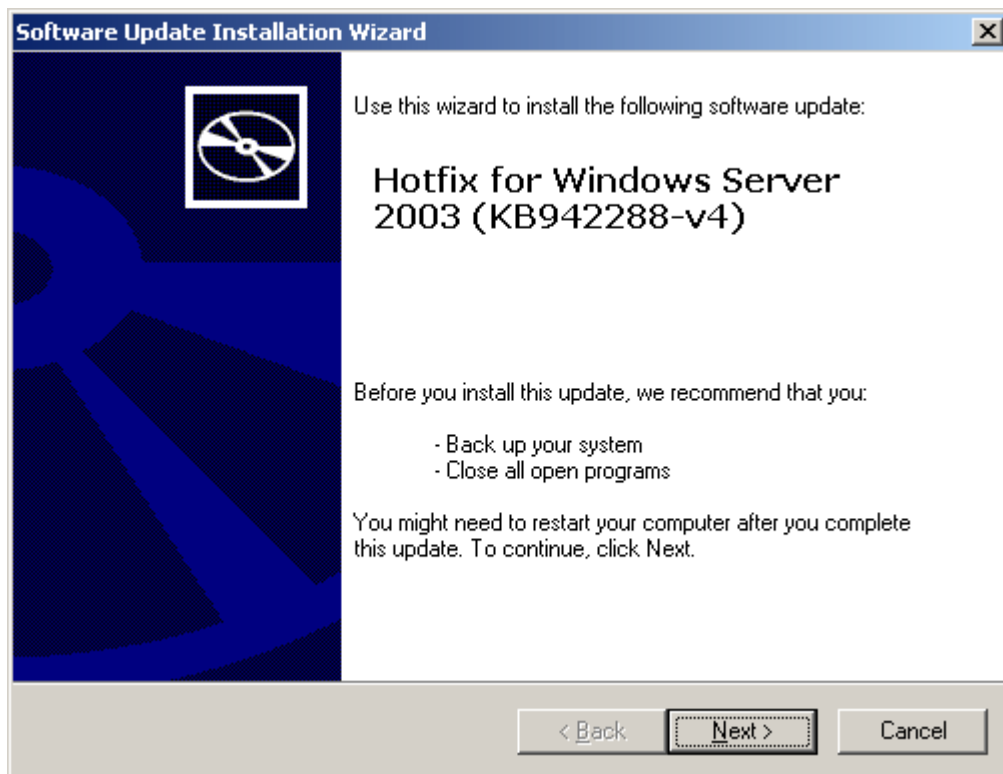


After clicking the ACCEPT button, you can click Install. The installation of the .NET Framework would start. When the installation of the .NET Framework is over, you would receive a message:

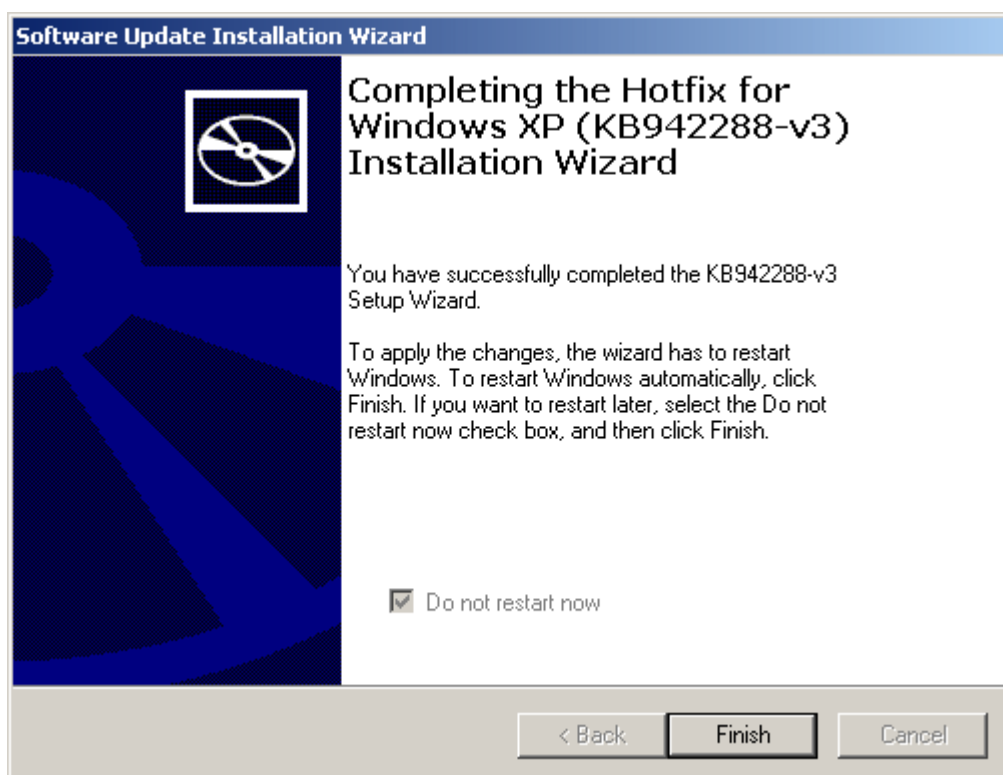


From there, you can click Exit. You may be asked to install a hotfix:



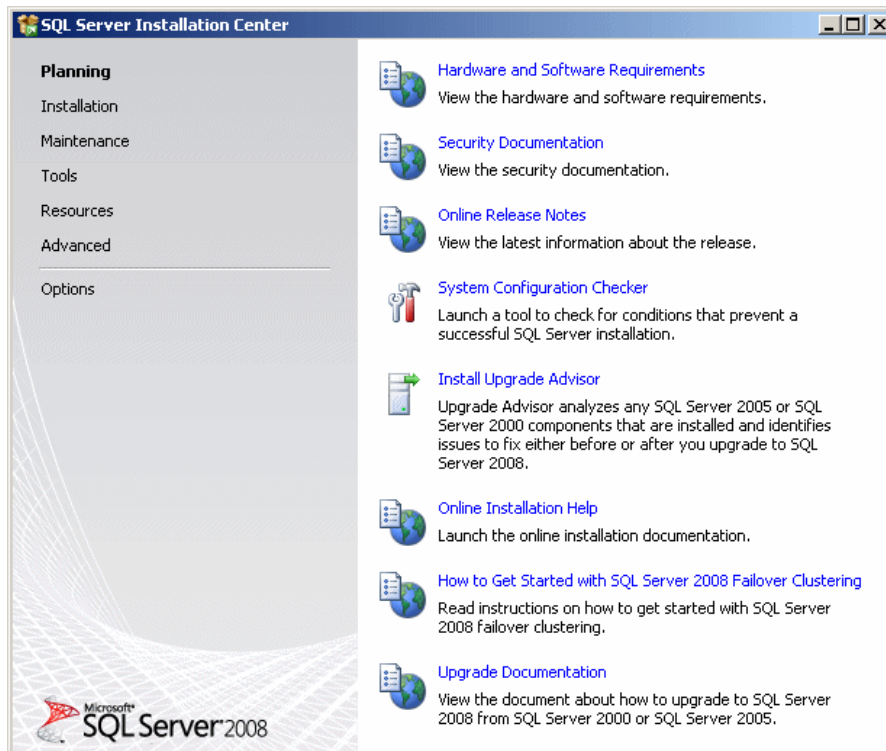


In this case, accept to install it by clicking Next and following the wizard. When the installation is over, you may be asked to restart:

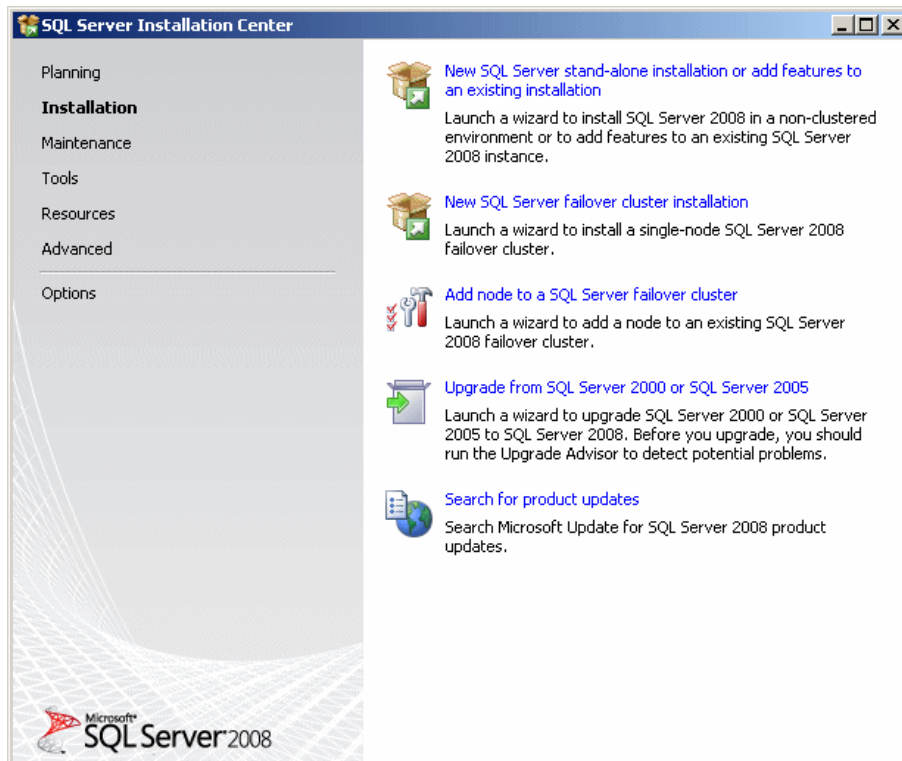


Which you should do.

3. To start the installation, put the Microsoft SQL Server 2008 DVD in the drive. A window would come up:



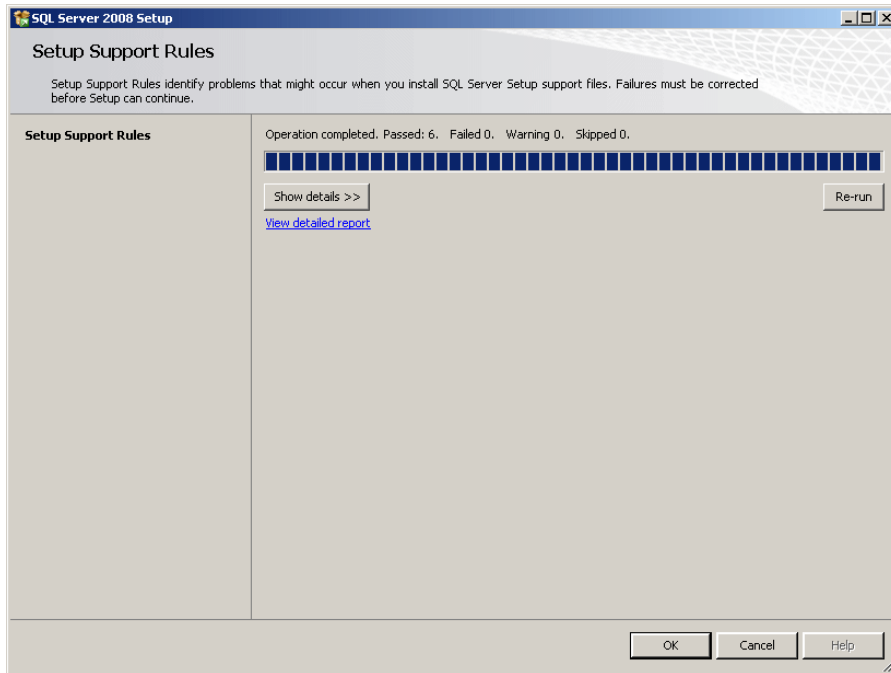
- 4.



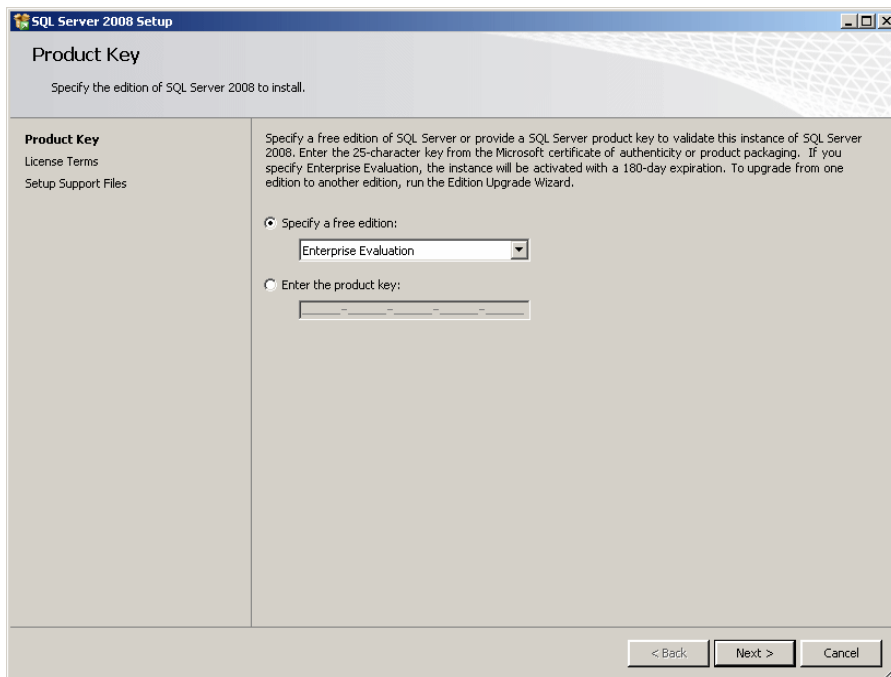
5. If you are only interested in studying database design and development in Microsoft SQL Server, on the right side, click New SQL Server Stand-Alone... The installation would start:



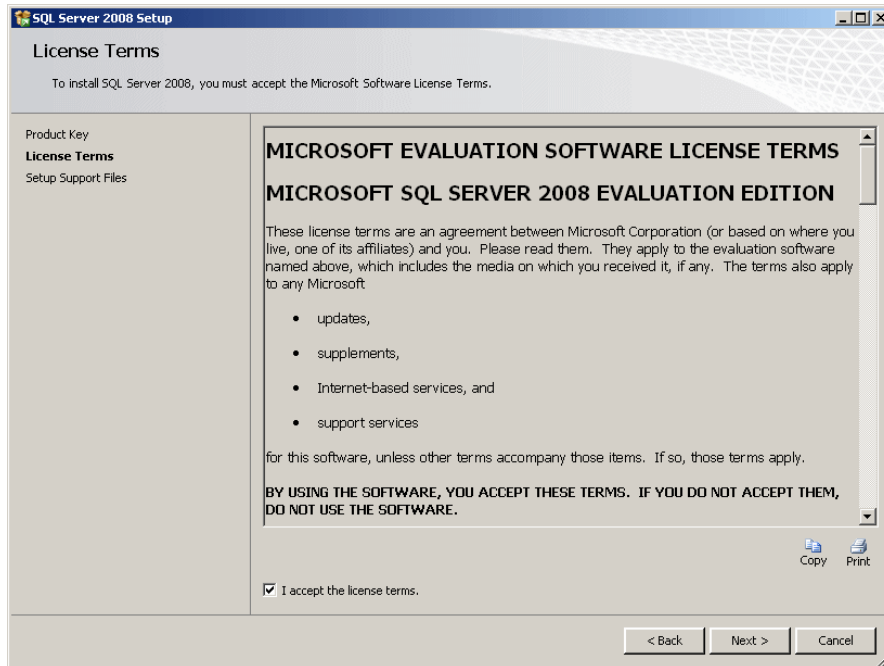
6. After the message box, click OK



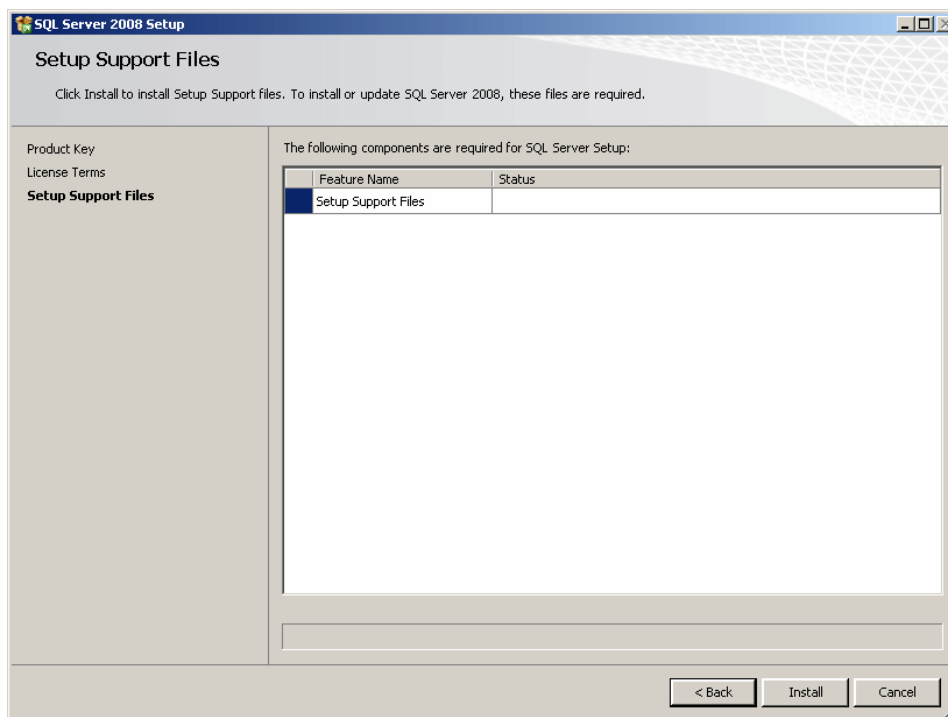
7. Another message box would come up. When it finishes, the next page of the wizard would come up. If you are using the evaluation version, read the message and click Next



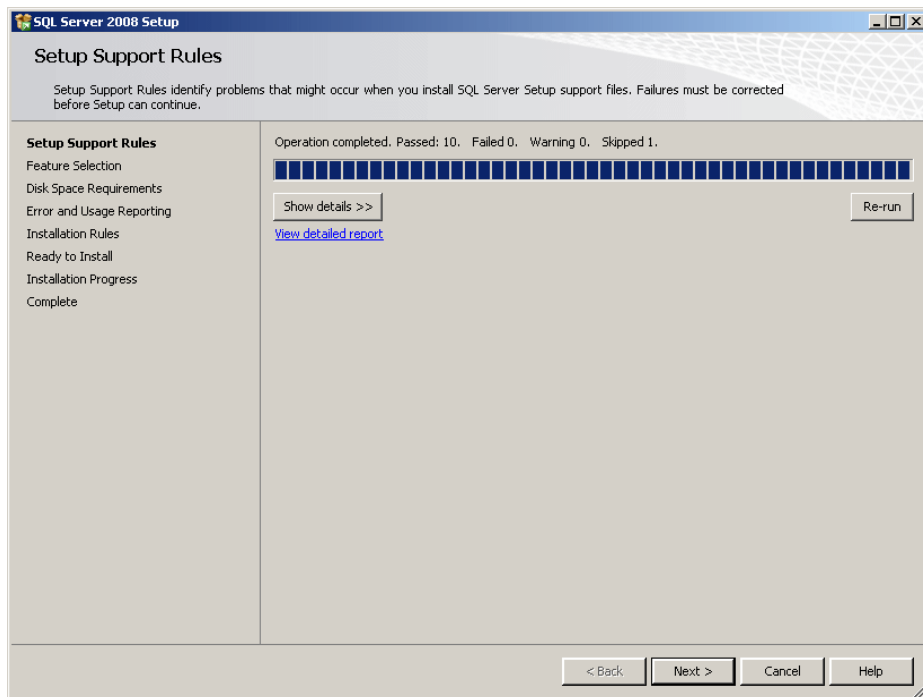
8. The License Terms page is presented to you. Read it. If you don't agree with the license, click Cancel. Otherwise, click the I Accept check box and click Next:



9. On the next page, read the messages and click Install:

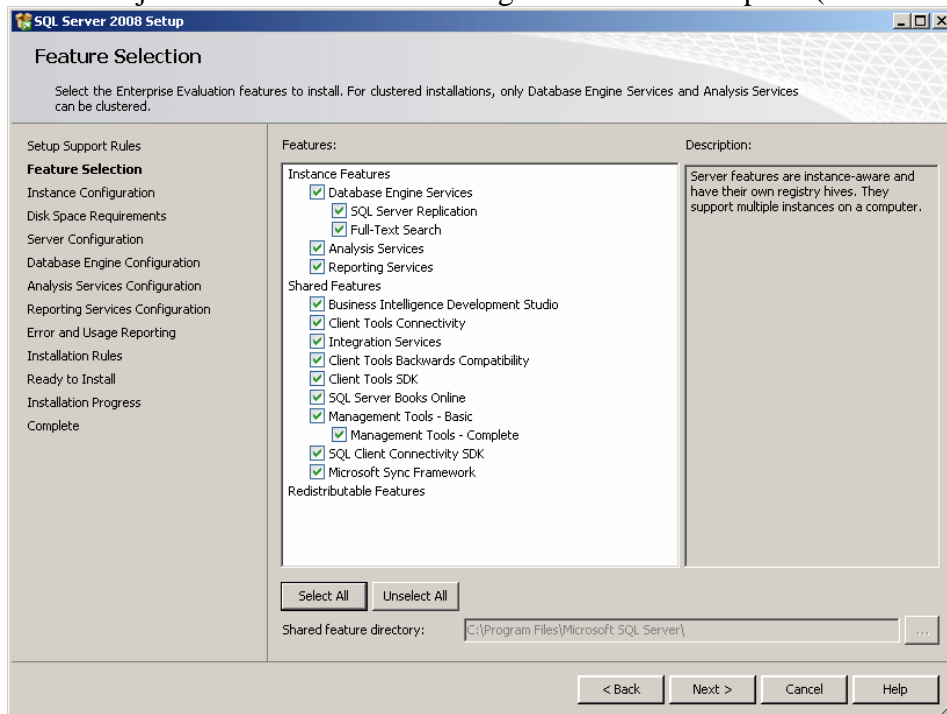


10. On the next page, read the messages and click Next:

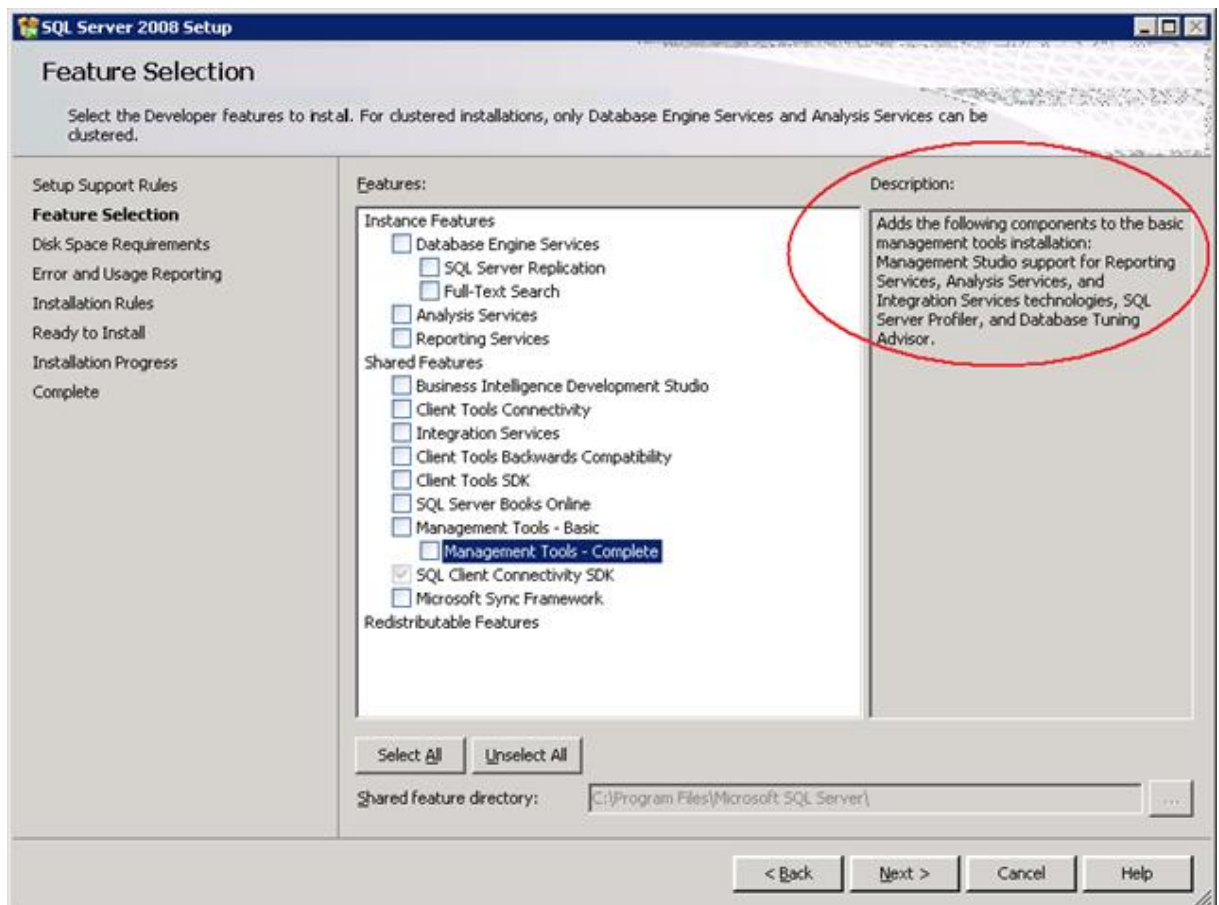
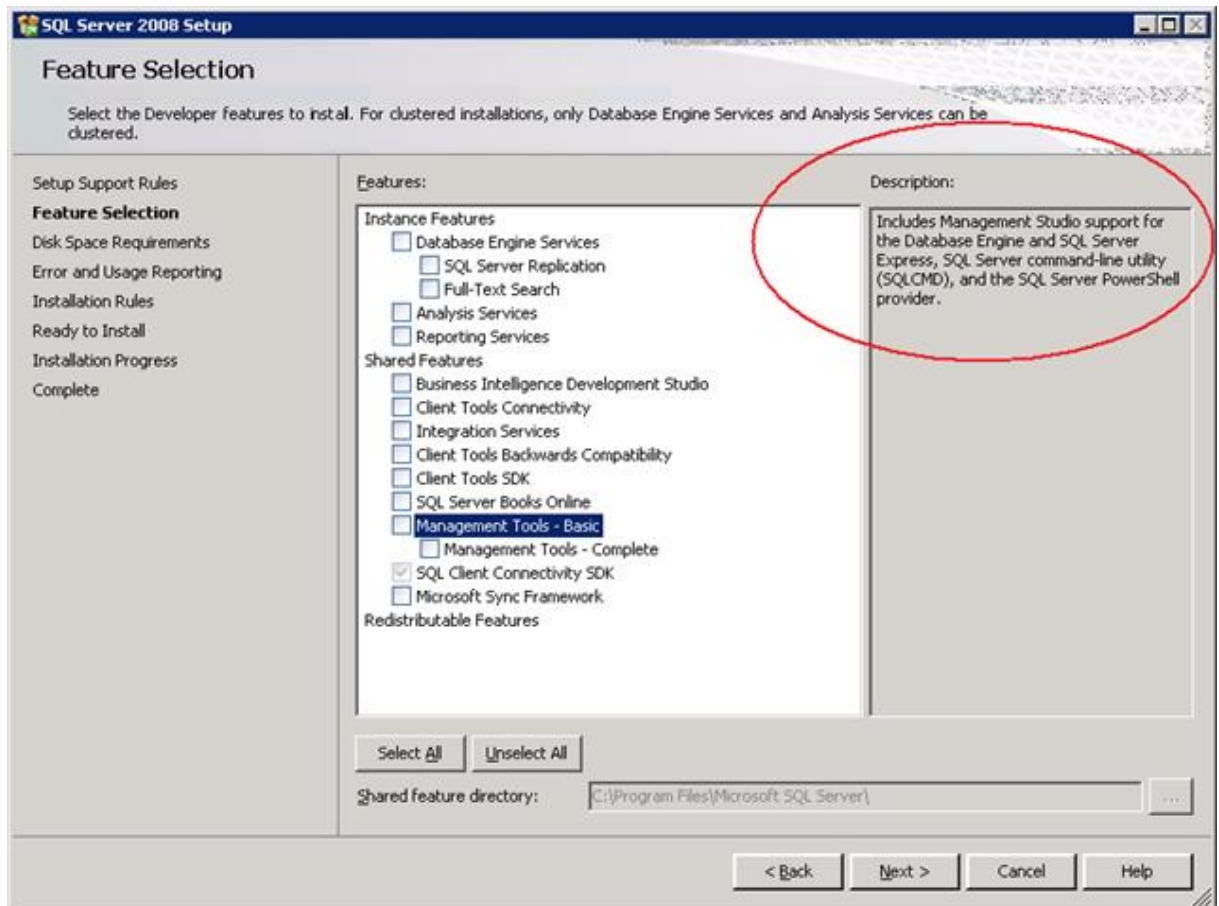


11. The next page allows you to specify what you want to install and what would be left out. After making your selections, click Next

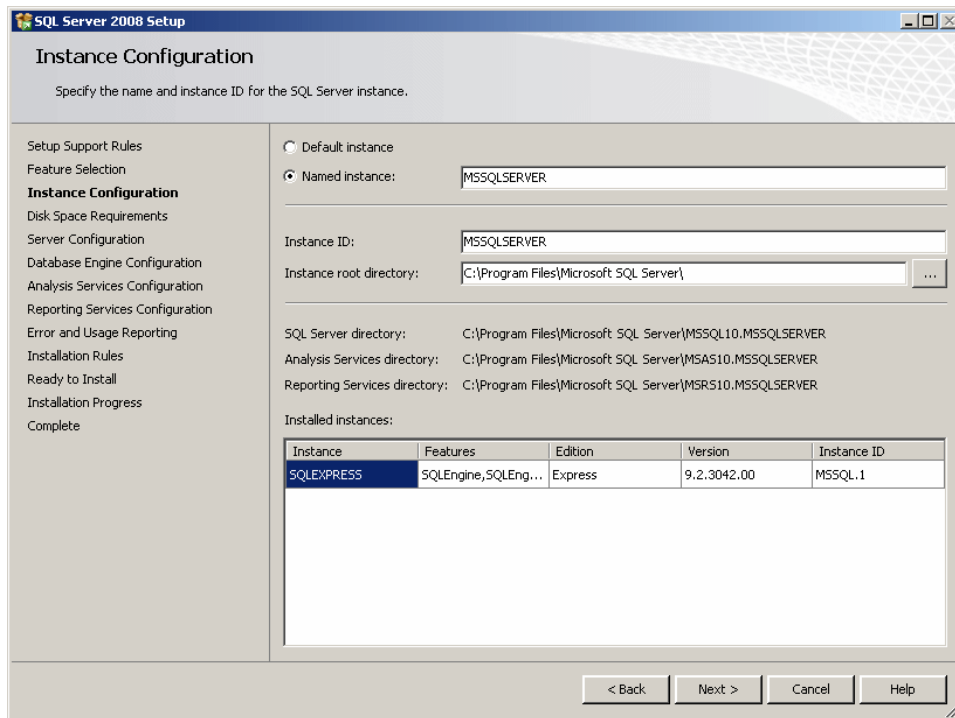
Om du enbart vill installera Management Studio så väljer du Management Tools Basic. Välj helst både Basic och Management Tools Complete (se nästa sida).



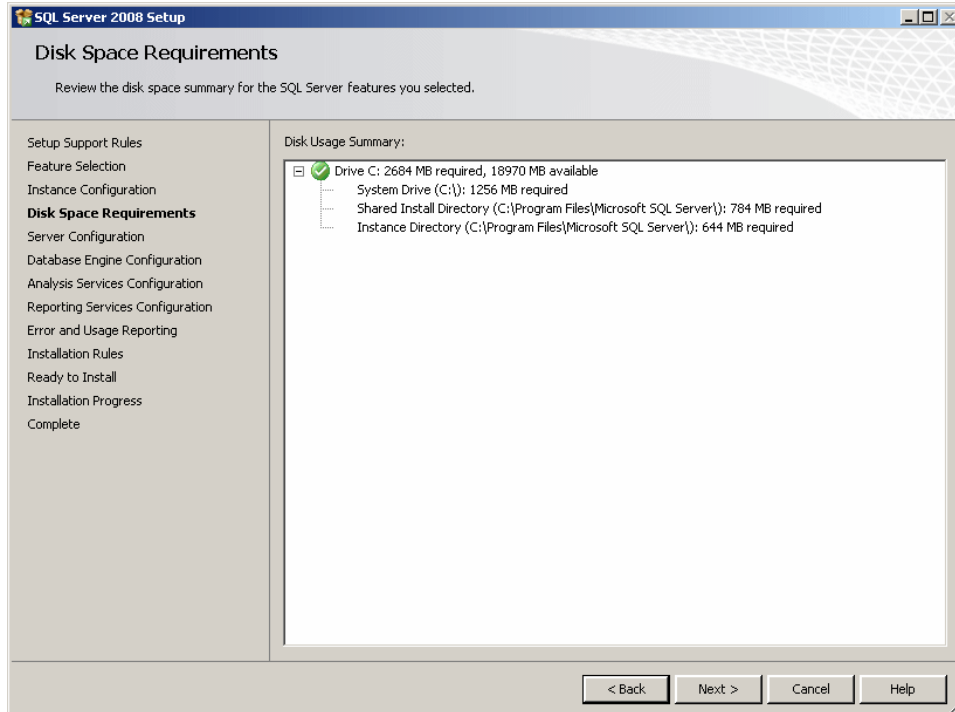
Skillnaden är att du får loiter flera möjligheter med Complete:



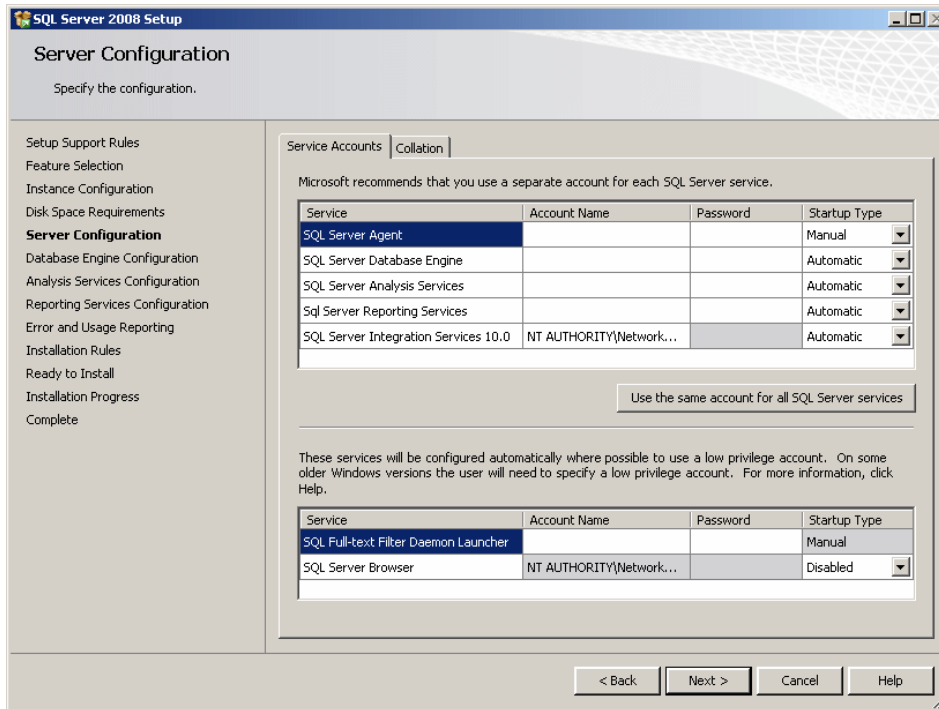
12. The next page allows you to name the instance and to specify where the server would be installed. After making your selections, click Next:



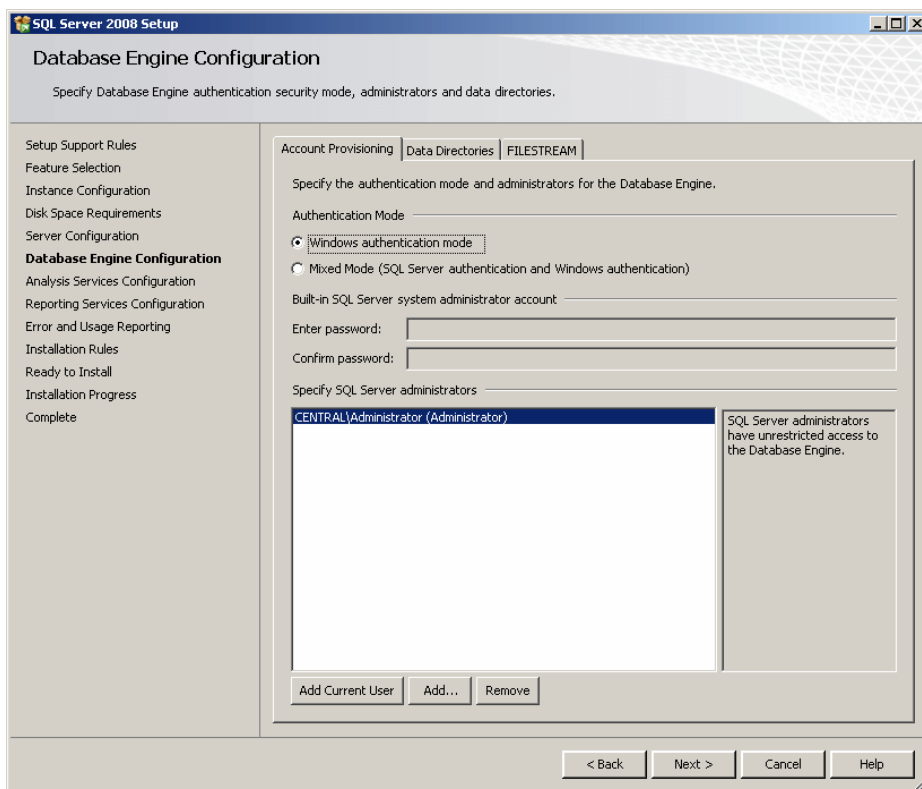
13. The next page mostly allows you to check and confirm the disk space. After checking it, click Next



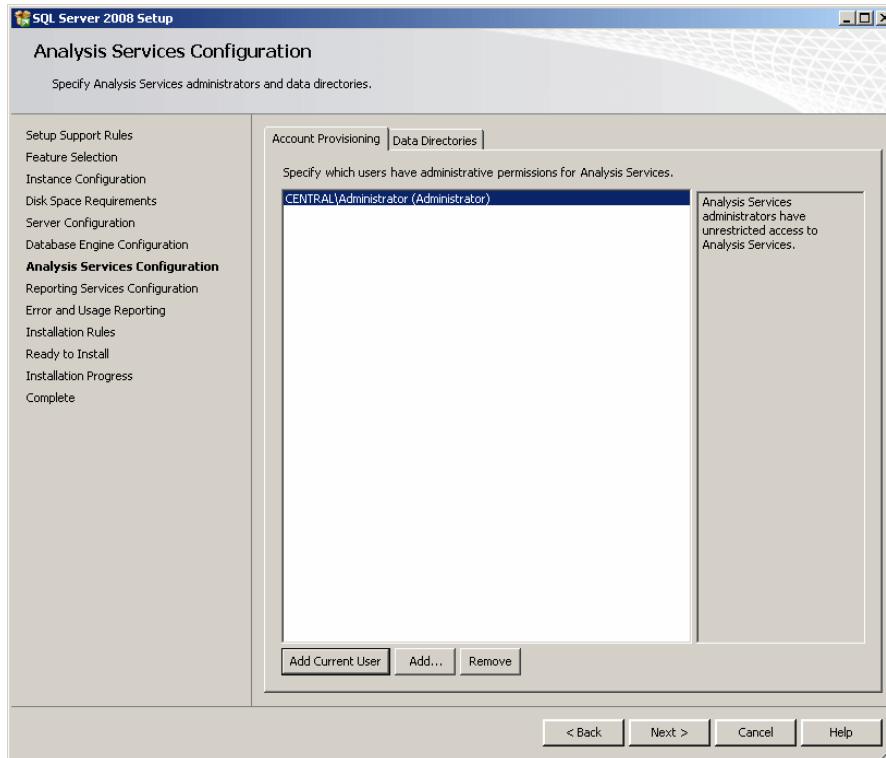
14. The next page allows you to configure the server. After making your selections, click Next



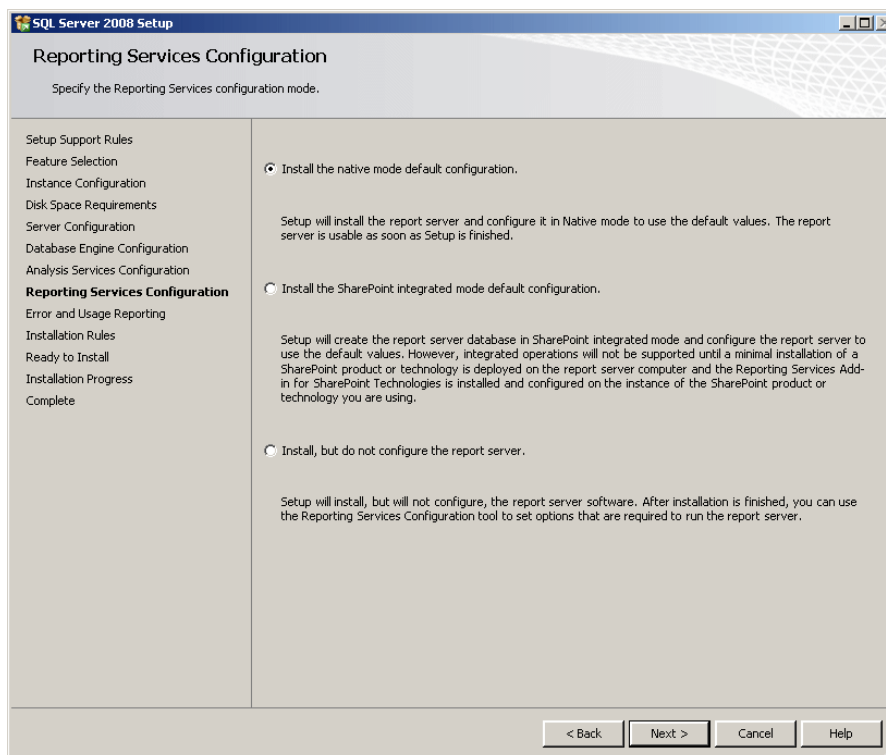
15. In the next page, specify how authentication would be made. You should also specify the account used as the administrator. To do this, you can click Add Current User. Then click Next



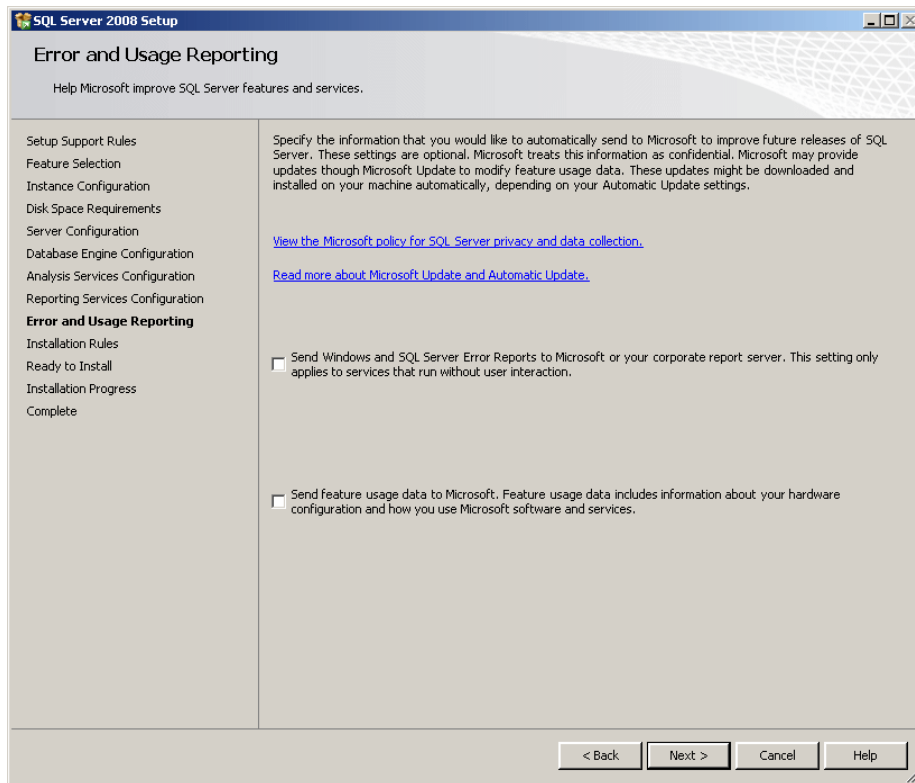
16. The next step allows you to specify an account for the analysis services. You can simply click the Add Current User and click Next



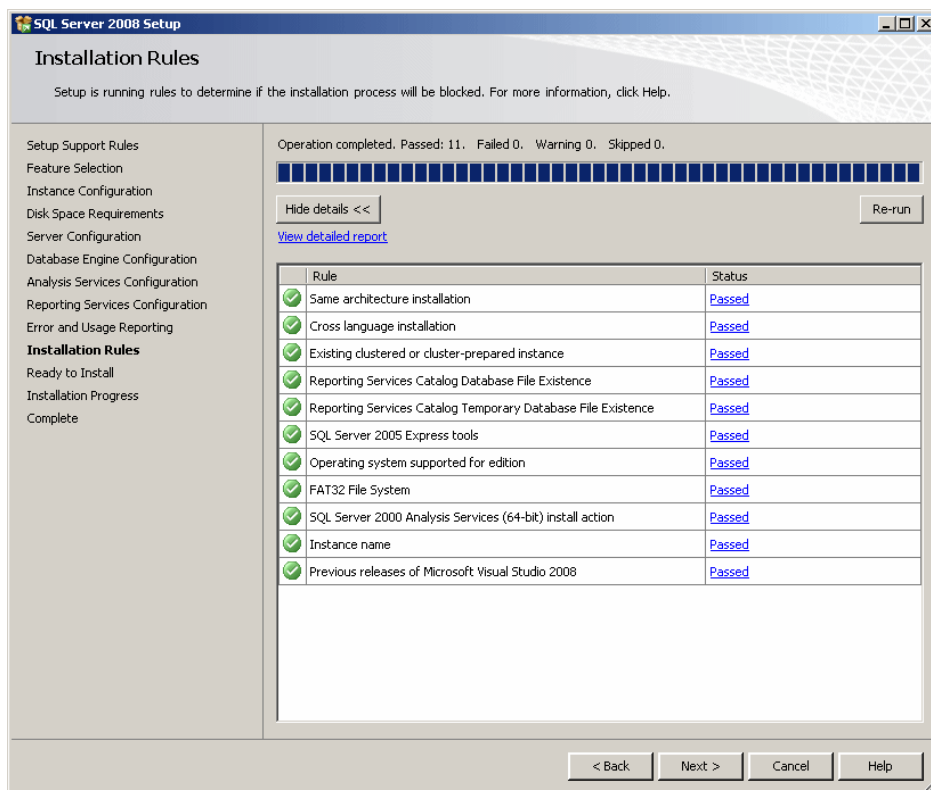
17. The next page allows you to specify the reporting service to install. Accept the default or make the necessary change. Then click Next:



18. The next page allows you to specify whether you want installation information to be collected and sent to Microsoft. After making your choice(s), click Next

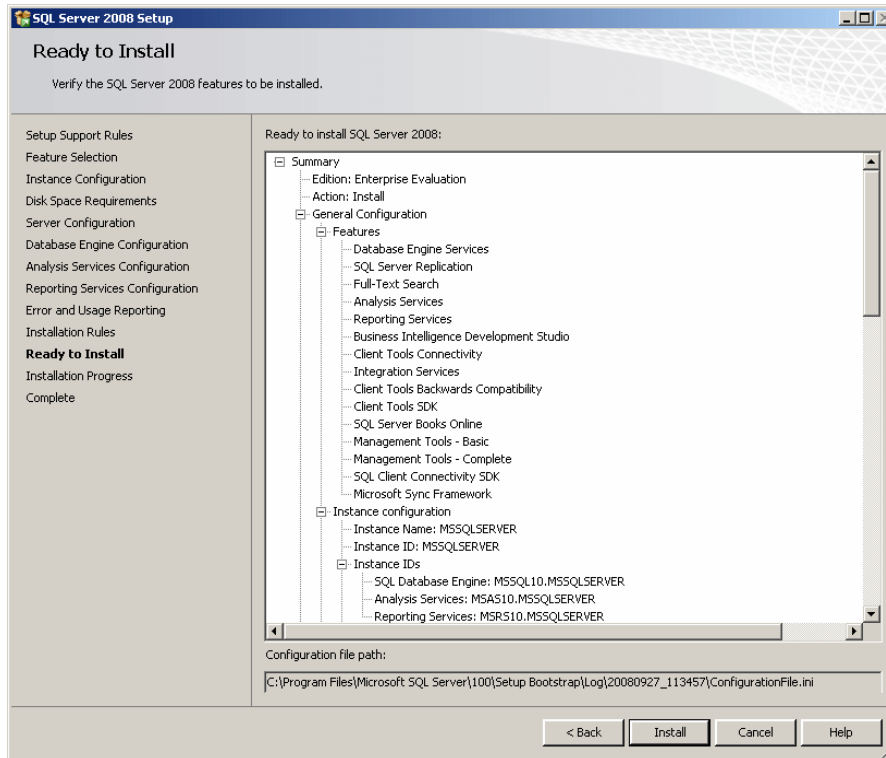


The pre-installation will proceed and let you know when it ends with the Installation Rules display:

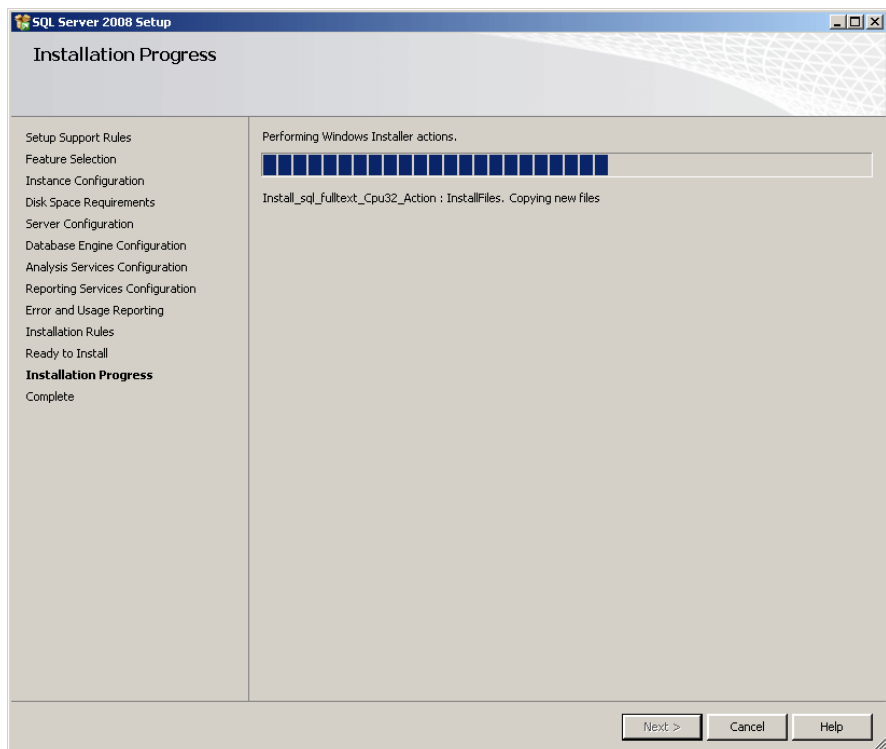


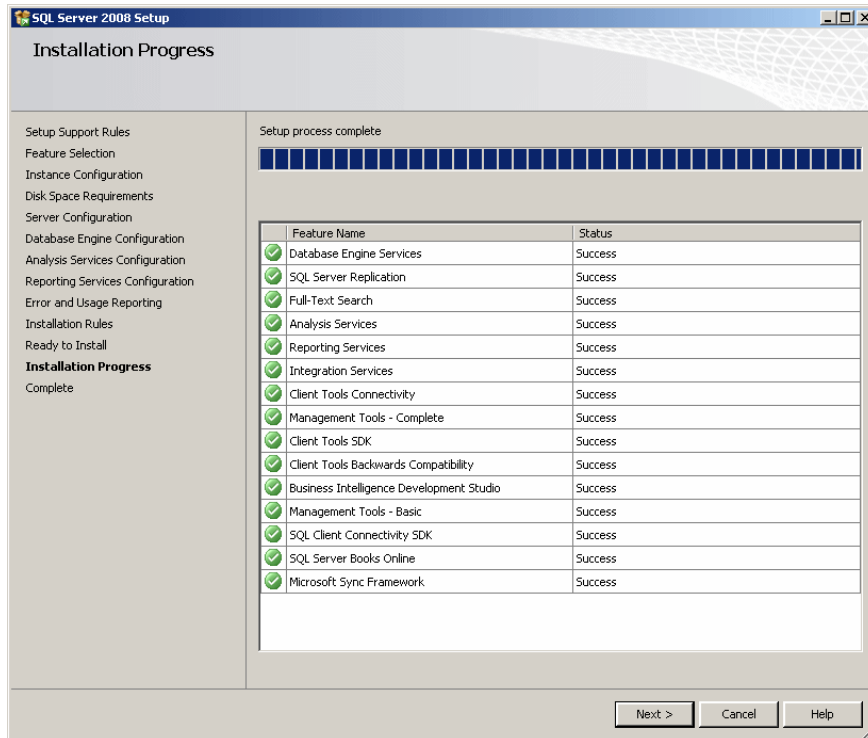
19. After reading, click Next.

This would indicate that the installation is ready to proceed:

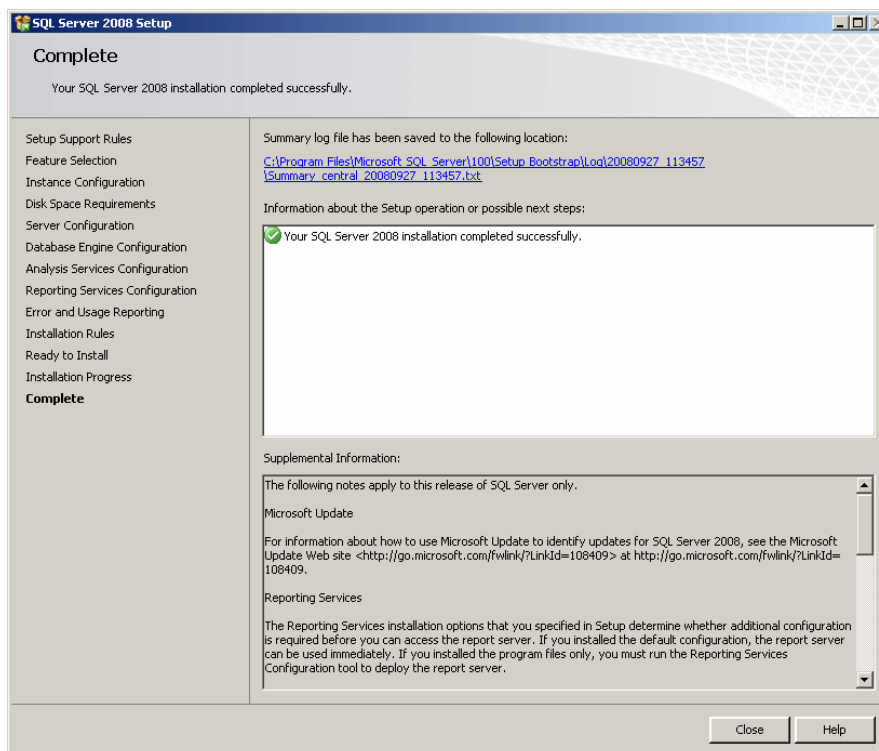


20. To start the installation, you can click Install. The installation would start and the progress bar would indicate the evolution. This can take a while





21. When this phase is over, a message box will let you know. After reading it, you can click Next. The last page of the wizard should announce that the installation was complete



22. After reading the message, you can click Close.

23. Starta din Management Studio som finns I Startmenyn och logga in.